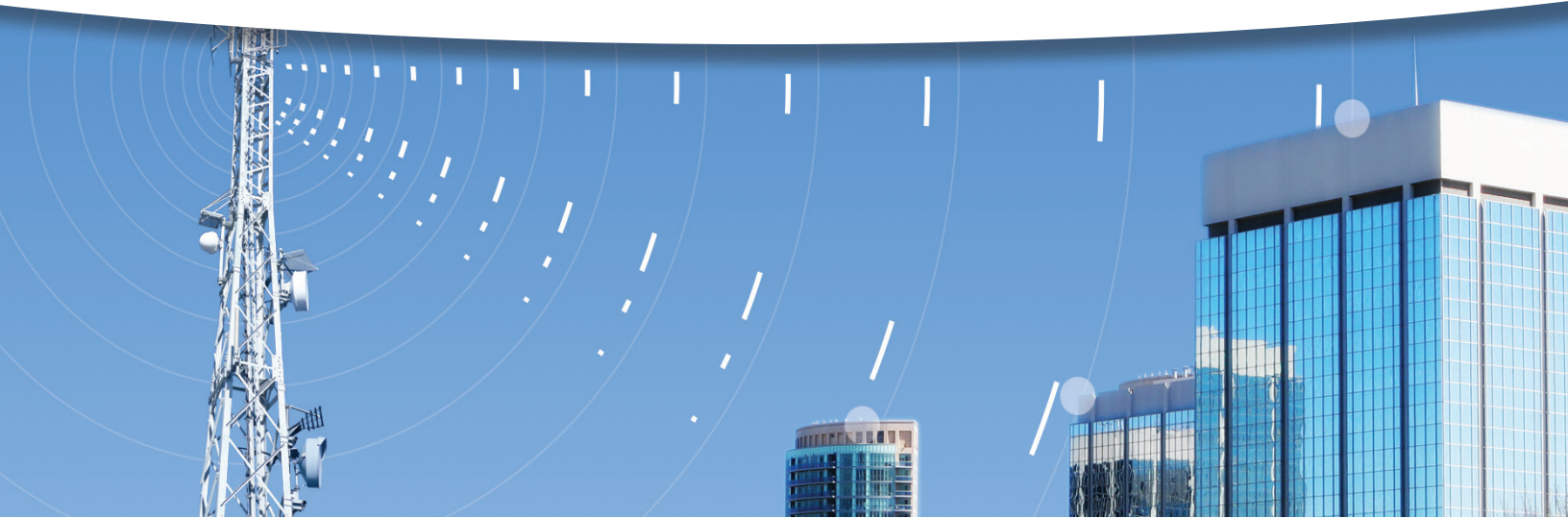


WavePoint 2.4 GHz Broadband Module

Part of FreeWave's Comprehensive Wireless M2M Communications Solution



Solution Highlights

WavePoint 2.4 GHz Broadband Module delivers connectivity using license-free radio spectrum in the 2.4 GHz ISM band

Over 200 Mbps with low latency to aggregate voice, video, and last mile infrastructure delivering industrial grade M2M/SCADA network connectivity

Self organizing, self healing network with relay, mesh and redundant links

High security radio links with WPA2 and 128 bit AES

Enables remote Wi-Fi service that improves field personnel connectivity and enhances productivity

Over the Air software upgrades and management

Professional services available for network design, path studies, and on-site support

FreeWave's award winning customer support services and 1-year warranty

The FreeWave Technologies' WavePoint™ 2.4 GHz Broadband Module is part of a comprehensive, industrial grade, wireless machine-to-machine (M2M) communications platform that delivers secure, high-speed wired and wireless communications.

WavePoint networks securely aggregate SCADA and M2M telemetry over a wireless broadband network, adding video surveillance, remote Wi-Fi access, and VoIP capabilities. This makes WavePoint very well suited for a broad range of applications in agriculture, utilities, government, industrial, surveillance, enterprise, public safety, and military.

Fast, Flexible and Secure

The 2.4 GHz Broadband Module delivers high-speed, very secure, reliable and resilient communications to remote sites along with industry standard security and flexible link routing. It operates in the 2.4GHz unlicensed ISM band with channels up to 40 MHz wide.

The 2.4 GHz Broadband Module is an option for the WavePoint 10e base unit, which supports up to 4 Radio Modules internally. The module can be configured to use one, two or 3 antennas in SISO or MIMO (up to 3x3) modes, or with multiple radios used for back-to-back repeating modes for link extension, or for multi-carrier very high access connectivity. It is compatible with portable devices using Wi-Fi. As a result, field personnel on-site can be connected to dispatchers and networked resources.

Adaptive link management monitors the RF environment for sources of interference and for devices it does not know and adjusts the data rate and modulation to optimize link performance in order to retain reliable, scalable communications under changing conditions. The over-the-air radio link is secured with WPA/WPA2, TKIP using 128-bit AES, WPA2 Enterprise and 802.11i.

WavePoint offers a wide array of modulation schemes and data rates, with the flexibility to meet your application needs. Path studies are essential to calculate the expected data rates for any given wireless link.

The 2.4 GHz Broadband Module is programmable for compliance with emission regulations in over 30 countries; making it truly a global radio module.



WavePoint 2.4 GHz Broadband Module: Radio Specifications

Compatibility	Data Rates (Maximum)	Transmit Power* (dBm, Maximum)	Receiver Sensitivity (dBm, Typical)
OFDM (per 20 MHz channel) 65 Mbps to 216 Mbps	MCS 0/8/16	28	≤ -89 dBm
	MCS 1/9/17	27	
	MCS 2/10/18	27	
	MCS 3/11/19	27	
	MCS 4/12/20	27	
	MCS 5/13/21	26	
	MCS 6/14/22	25	≤ -72 dBm
	MCS 7/15/23	23	

*Tolerance on transmit power levels is +1/-2 dB

WavePoint 2.4 GHz Broadband Module: Technical Specifications

MODULE SPECIFICATIONS

Network Configurations	PTP, PMP, Fixed Point Mesh, Mobile Mesh
Frequency Band	2.41 to 2.47 GHz (ITU ISM band)
Modulation	OFDM: BPSK, QPSK, 16-QAM, 64-QAM With Adaptive Rate Modulation
Channel Size	20 MHz
Over-the-air Security	WPA, WPA2, WPA2-Enterprise, AES-128, 802.11i
Antenna Ports	Supports SISO and MIMO up to 3x3
Wireless Approvals	FCC Part 15.247

FreeWave Technologies, Inc.

5395 Pearl Parkway, Suite 100, Boulder, CO 80301 TF 866.923.6168 T 303.381.9200
 For more information, visit www.freewave.com

Specifications are subject to change without notice.
 ©2014 FreeWave Technologies, Inc. All rights reserved.

